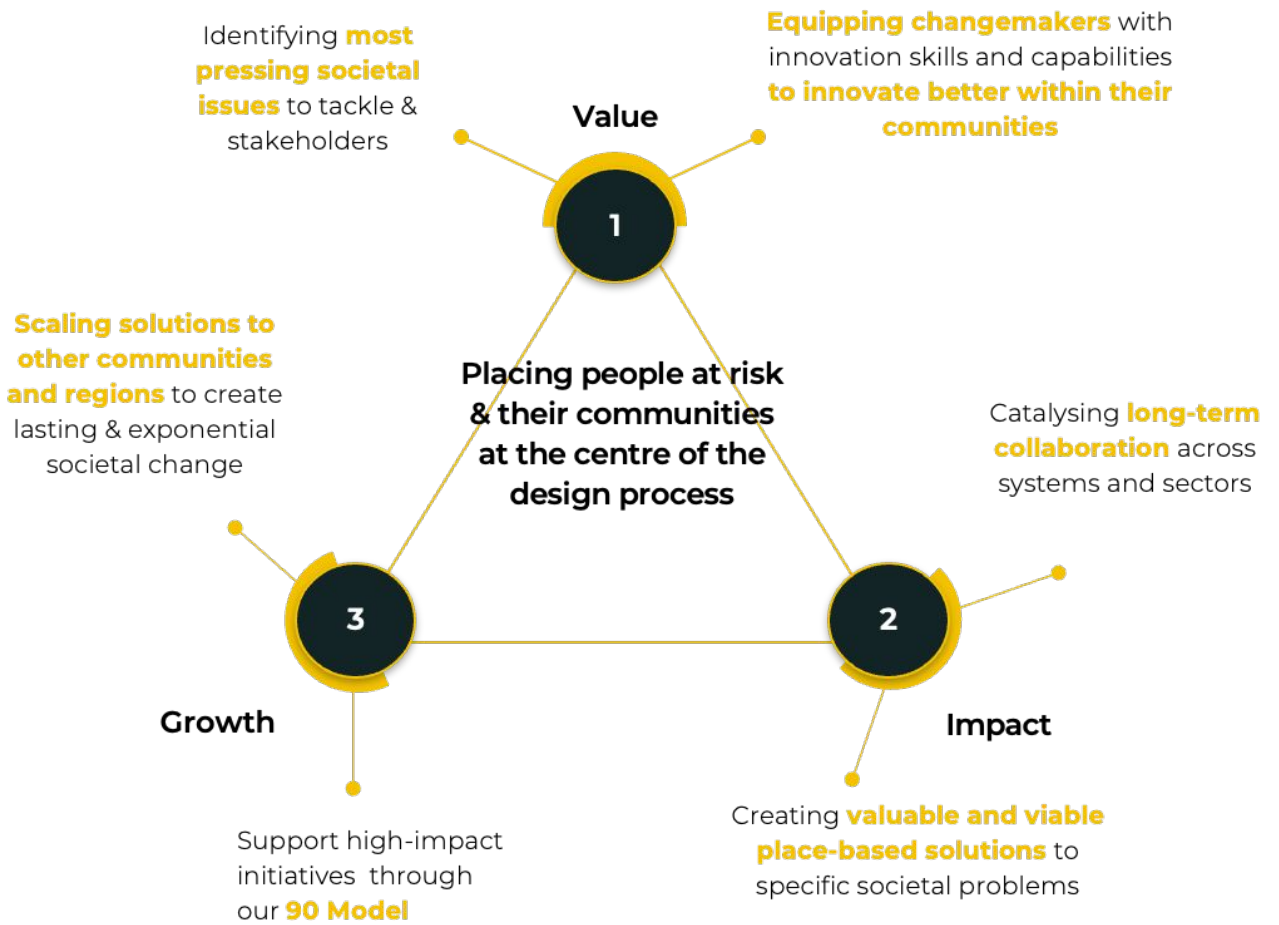


Impact Programmes

Our Path to Scale



Problem immersion

Working with at-risk groups to break a problem / risk area into its most impactful and affectable elements

Self-guided sprints

Participants conduct daily self-guided activities to build and validate their idea

Idea Assessment

Ideas are presented back to at-risk groups who assess them

Ideation

Generating initial solutions to these problems

Coaching

With innovation experts who provide support and challenge

Customer & expert sessions

With at risk groups / charity partners to ensure the solution meets their needs

Implementation support

With evaluating how chosen ideas can move to implementation